



The California State University
INTERNATIONAL PROGRAMS

STUDY ABROAD WITH CSU IP

ABOUT CSU IP

18 COUNTRIES

60+ PROGRAMS WORLDWIDE

**ACADEMIC YEAR, CALENDAR YEAR
& SEMESTER OPTIONS**

IP STUDENTS EARN CSU CREDIT

PAY CSU TUITION ABROAD

FINANCIAL AID APPLIES



WHERE IN THE WORLD IS CSU IP LOCATED?

AUSTRALIA CANADA
CHILE CHINA DENMARK
FRANCE GERMANY
GHANA ISRAEL ITALY JAPAN
MEXICO SOUTH AFRICA
SOUTH KOREA SPAIN SWEDEN
TAIWAN UNITED KINGDOM





The California State University
INTERNATIONAL PROGRAMS

WHY STUDY ABROAD?

**OPPORTUNITY TO EXPERIENCE A
NEW CULTURE**

**STAY ON TRACK FOR
GRADUATION**

SAVE MONEY!

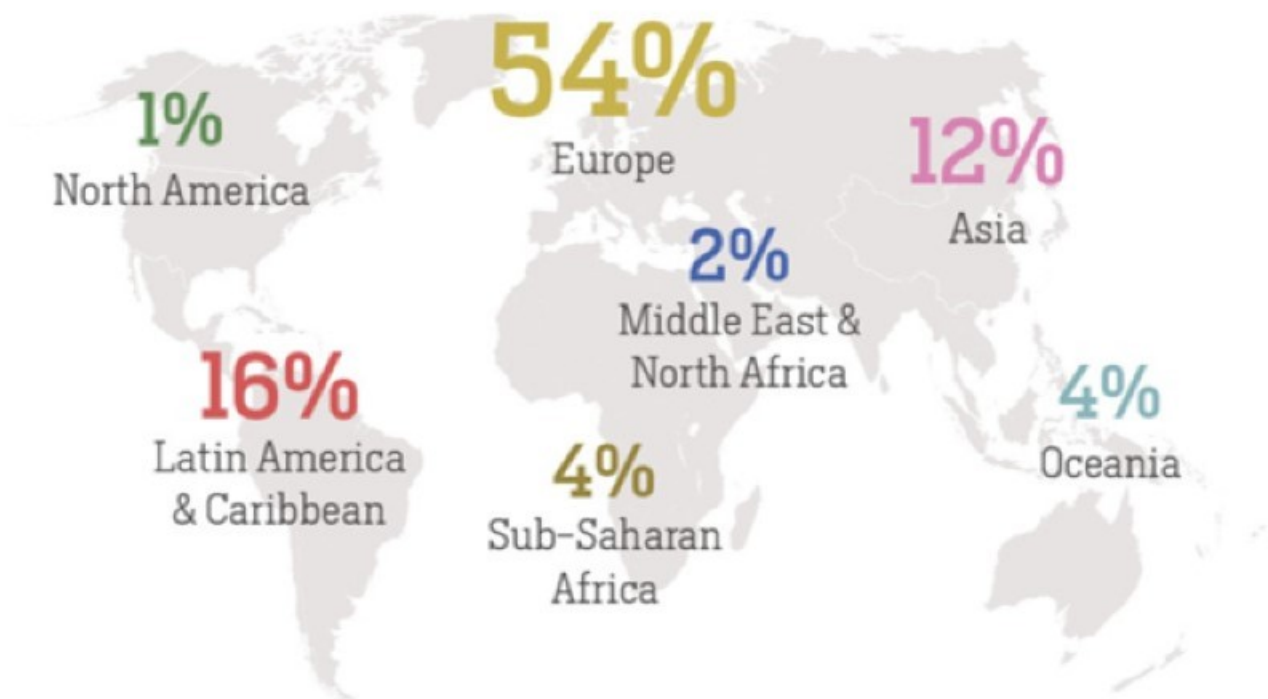
BUILD YOUR RESUME

LEARN A NEW LANGUAGE

FORM NEW RELATIONSHIPS

SEE THE WORLD!

HOST REGIONS OF U.S. STUDY ABROAD STUDENTS



Europe hosts **over half** of U.S. study abroad students.

Open Doors is conducted by the Institute of International Education with the support of the Bureau of Educational and Cultural Affairs of the U.S. Department of State. Online at: www.iie.org/opendoors



CSU FAST FACTS

- 400-600 CSU students study abroad with CSU IP annually
- 10 CSU campuses rank amongst the top 20 in long-term duration (academic year) study abroad*
- Top subjects studied abroad by CSU IP students include: Architecture, Biology, Business, Kinesiology, Political Science, and Psychology.

NATIONAL STATS**

- 1.6% of students study abroad
- 97% of study abroad students found employment within 12 months of graduation
- Students develop cross-cultural understanding
- Study abroad improves language skills

*Source: IIE "Open Doors Report" <https://www.iie.org/Research-and-Insights/Open-Doors>
**Source: NAFSA "Independent Research Measuring the Impact of Study Abroad" <https://www.nafsa.org>



The California State University
INTERNATIONAL PROGRAMS

CAN STUDENTS AFFORD STUDY ABROAD?

YES!

Students pay CSU tuition

Financial aid and fee waivers are applicable

In several countries, student visas include permission to work abroad

Cost of living can be significantly lower in many cities

Additional scholarships are available!

SCHOLARSHIPS

CSU IP SCHOLARSHIPS

CSU IP SCHOLARSHIP - \$750 | All CSU IP Programs, multiple recipients

CSU IP LANGUAGE AND CULTURE SCHOLARSHIP - \$1000 | All CSU IP Language and Culture Programs, multiple recipients

CSU IP GHANA SCHOLARSHIP - \$1000 | Ghana: University of Ghana Program

MICHELLE MARRIOTT MEMORIAL SCHOLARSHIP - \$1500 | France: Language & Culture Program

WARD WALLACH MEMORIAL SCHOLARSHIP - \$500 | CSU IP Japan Programs

OTHER SCHOLARSHIPS

BADEN-WÜRTTEMBERG FELLOWSHIP PROGRAM - €400 PER MONTH | Any CSU IP Germany Program

BENJAMIN A. GILMAN SCHOLARSHIP – UP TO \$5,000 PER SEMESTER | Pell Grant Recipients

BOREN SCHOLARSHIP – UP TO \$20,000 | Programs in Chile, China, Ghana, Israel, Japan, Mexico, South Africa, South Korea, and Taiwan

FUND FOR EDUCATION ABROAD (FEA) SCHOLARSHIP – UP TO \$10,000 | All CSU IP Programs

JAPAN STUDENT SERVICE ORGANIZATION (JASSO) SCHOLARSHIP – ¥80,000 PER MONTH | Japan: Waseda University Program

AND MANY MORE ...

WILL STUDENTS EARN ACADEMIC CREDIT ABROAD?

- All credit earned through CSU IP reflects on students' transcripts as CSU credit.
- Students return with approximately 15 CSU semester units per semester.
- Students may take GE, Major, or Minor coursework abroad.
- All courses should be reviewed by CSU campus faculty to determine the *type* of credit the course will fulfill.

A low-angle, upward-looking photograph of several European-style buildings. The buildings are made of light-colored stone or plaster, with visible windows, balconies, and architectural details like cornices and arches. The sky is a clear, pale blue. The perspective creates a sense of height and grandeur.

CSU

The California State University
INTERNATIONAL PROGRAMS

OPPORTUNITIES ABROAD

GET INVOLVED

INTERNSHIPS AVAILABLE

VOLUNTEER

JOIN A LOCAL CLUB OR SOCIETY

NETWORKING OPPORTUNITIES

RESEARCH PROJECTS

STUDIO WORK SHOWCASES

WORK ABROAD





The California State University
INTERNATIONAL PROGRAMS

HOW TO CHOOSE A PROGRAM

WHERE TO START?

- When do you want to go?
- What country or region of the world are you interested in?
- What are the best programs for the subject of study?
- Do you speak another language? Or what to learn another language?



PROGRAM TYPES

LANGUAGE & CULTURE PROGRAMS

Students go abroad to learn a new language and take GE coursework.

FULL IMMERSION LANGUAGE PROGRAMS

Students are at an intermediate or advanced level of language and take coursework in various subjects taught in the local language.

FULL IMMERSION ENGLISH PROGRAMS

Students enroll in a local university and take coursework in various subjects taught in English.

STUDY CENTER PROGRAMS

Students attend an abroad study center with other CSU and/or American study abroad students.

OTHER FACTORS TO CONSIDER

Cost of Living

City Size and Population

Program/University Size

Internship Opportunities

**Race/Gender/LGBTQ Host
Country Culture**

BENEFITS OF STUDYING ABROAD FOR A YEAR

BECOME MORE THAN A TOURIST

After spending one semester abroad, students become more involved in local activities, they know local people, and feel more at home abroad.

LANGUAGE ACQUISITION

Spending two semesters abroad allows students to fully develop their language skills. Participants are surrounded by language in their daily life abroad in addition to learning and advancing in the classroom. Some students are able to add a language major or minor following their time abroad.

STAY ON TRACK FOR GRADUATION

Students earn CSU credit towards their major, minor, and GE requirements with CSU IP. Students should work with their advisors to pick the best program for in order to make degree progress while abroad.

AFFORDABLE

Students attending CSU IP programs pay CSU tuition. Financial aid applied to the cost of tuition and additional scholarships are available. Some cities overseas have a lower cost of living than California, allowing some students to save money while studying abroad!

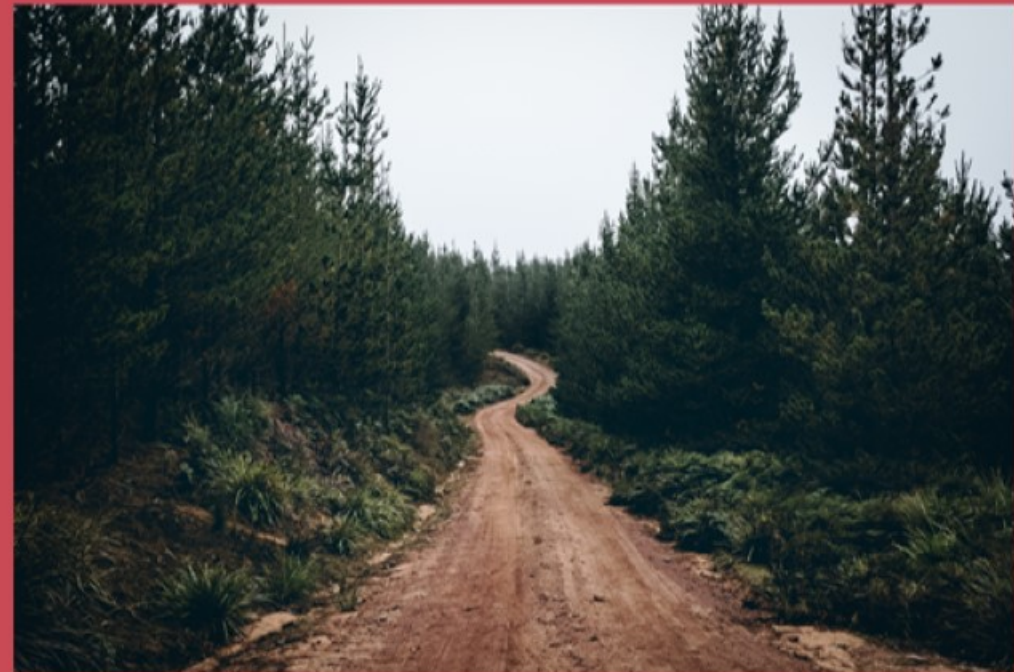
SOME TRAVEL IS INCLUDED

Some programs include day trips and excursions as part of the program fee. Students are able to travel with experienced staff to visit and learn about new locations in their host country.

DON'T FEAR THE
YEAR!

AVAILABLE SEMESTER PROGRAMS

- Chile
- China
- France
- Germany
- Ghana
- Israel
- Italy
- Mexico
- South Africa
- Spain
- Sweden
- Taiwan



An aerial photograph of ocean waves breaking, with two surfers visible in the water. The text is overlaid on this image.

CSU

The California State University
INTERNATIONAL PROGRAMS

APPLICATION REQUIREMENTS AND HOW TO APPLY



The California State University
INTERNATIONAL PROGRAMS

PROGRAM REQUIREMENTS

GPA REQUIREMENTS VARY BETWEEN 2.5 AND 3.2

Some GPA requirements are flexible!

PRE-REQUISITES

A few programs have required pre-requisites (language & business); some have suggested pre-requisites.

CLASS STANDING

Many programs are available to sophomores!

TRANSFER STUDENTS MAY STUDY ABROAD WITH CSU IP

APPLICATION PROCESS

ACADEMIC YEAR, CALENDAR YEAR AND SEMESTER OPTIONS

MULTIPLE DEADLINES (VARIES BY PROGRAM)

CSU IP recommends that students apply early, as spaces on competitive programs can fill up!

Calendar Year and Spring Semester: September 15 and October 15

Academic Year and Fall Semester: January 15, February 15, March 15,
and April 15

APPLY VIA THE CSU IP PORTAL

csuip.calstate.edu

ASK FOR RECOMMENDATIONS

CSU IP requires the following recommendations to be submitted with student applications via the IP Portal:

Faculty Recommendation

Language Faculty Recommendation (where applicable)

IP Coordinator/Study Abroad Advisor Recommendation



SCHOLARSHIP APPLICATIONS

CSU IP SCHOLARSHIPS

The scholarship questionnaire must be completed with CSU IP application in via IP portal online.

**DUE SEPTEMBER 15 FOR CALENDAR YEAR
AND SPRING SEMESTER APPLICATIONS**

**DUE FEBRUARY 15 FOR ACADEMIC YEAR
AND FALL SEMESTER APPLICATIONS**

OUTSIDE SCHOLARSHIPS

Students should begin researching scholarship opportunities as soon as possible. Students may apply for most scholarships prior to receiving and admissions decision from CSU IP. Additional scholarships may be provided by the student's campus as well!

**SCHOLARSHIP DEADLINES WILL VARY BY
ORGANIZATION**



The California State University
INTERNATIONAL PROGRAMS

APPLICATION REVIEW

APPLICATIONS ARE REVIEWED BY A COMMITTEE

The committee is comprised of 6-8 faculty from various CSU campuses and one CSU IP Coordinator.

WHAT DOES THE COMMITTEE LOOK FOR?

The committee considers the following during the application review: GPA, recommendations, essays, transcript and course review, and subject of study.

ADMISSIONS DECISIONS RELEASED 4-6 WEEKS FOLLOWING THE DEADLINE

PRE-DEPARTURE STEPS & SERVICES

ADVISING VIA PHONE & EMAIL

PRE-DEPARTURE ORIENTATION

**PRE-DEPARTURE E-NEWSLETTER
SERIES**

**VISA INFORMATION PACKET &
SUPPORT**

**CSU IP PORTAL POST-DECISION
STEPS SUCH AS:**

- Deposit
- Required documents
- Host university applications
- Housing information
- Flight information

NEXT STEPS

CONTACT YOUR IP COORDINATOR IN
YOUR STUDY ABROAD OFFICE

START YOUR CSU IP APPLICATION

MEET WITH YOUR ACADEMIC
ADVISOR AND DISCUSS COURSES
YOU SHOULD TAKE ABROAD

IF YOU HAVE ANY QUESTIONS, REACH
OUT TO CSU IP VIA EMAIL AT
CSUIP@CALSTATE.EDU



CSU

The California State University
INTERNATIONAL PROGRAMS

?

QUESTIONS